



**EVERGREEN**  
drive to the future

# Winter EAW86

Designed for excellent winter traction in extreme weather conditions on a variety of surfaces.



**SAFETY**

3PMSF and M+S mark ensure excellent grip on ice and snow.



**CONTROL**

Excellent traction and control for all-axle applications.



**TOUGHNESS**

Excellent anti-wear performance in winter.

# Winter **EAW86**

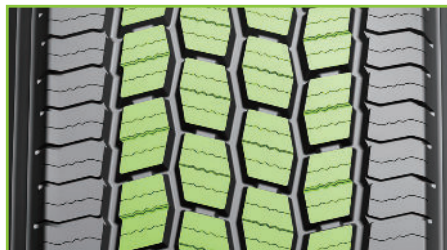


## TECHNICAL FEATURES

The 3D-siping technology provides the best traction results a lifetime safety.





Anti-slip blocks provide superior braking and stability on ice and snow surface.

Wider shoulder ribs deliver optimum stability and driver comfort.



## SIZE RANGE

▲ Recommend   
 △ Allow 

Size	PR	LI/SS	Tread Depth (mm)	M+S					
385/55R22.5	24PR	160K	15	√	√	D	C	74db	B
385/65R22.5	24PR	164K	15	√	√	D	C	74db	B



[www.gummiservice.no](http://www.gummiservice.no)

### SALGS OG ORDREKONTOR

Sarpsborgveien 121, 1640 Råde • Tlf: 69 28 15 90 / 69 28 15 80 • [ordre@gummiservice.no](mailto:ordre@gummiservice.no)

#### SARPSBORG

Bjørnstadmyra  
1712 Grålum  
Tlf: 69 28 15 95  
[sarpsborg@gummiservice.no](mailto:sarpsborg@gummiservice.no)

#### TRONDHEIM

Kvenildmyra 5  
7093 Tiller  
Tlf: 73 93 33 00  
[trondheim@gummiservice.no](mailto:trondheim@gummiservice.no)

#### OSLO NORD

Lørenskogveien 75  
1470 Lørenskog  
Tlf: 67 90 93 00  
[oslonord@gummiservice.no](mailto:oslonord@gummiservice.no)

#### OSLO SØR

Håndverksveien 12  
1405 Langhus  
Tlf: 64 84 00 55  
[oslosor@gummiservice.no](mailto:oslosor@gummiservice.no)